



10451 ROSELLE STREET, #300, SAN DIEGO, CA 92121  
TELEPHONE (858) 642-1988 • FAX (858) 642-1989  
WWW.ATSBIO.COM • ATS@ATSBIO.COM

### Antibody to Somatostatin Receptor-1 (SSTr1), Affinity-Purified RABBIT POLYCLONAL

**Catalog Number:** AB-N20AP  
**Quantity:** 50 micrograms  
**Format:** PBS (0.14 M Sodium Chloride; 0.003 M Potassium Chloride; 0.002 M Potassium Phosphate; 0.01 M Sodium Phosphate; pH 7.4), with BSA, no preservative.  
**Host:** Rabbit  
**Immunogen:** peptide corresponding to the extracellular domain of rat SSTr1 conjugated to keyhole limpet hemocyanin (KLH)

#### Background:

Somatostatin Receptor-1 is one of five receptor subtypes termed SSTr1-5. They are G-protein-coupled receptors characterized by seven transmembrane helices with an extracellular amino terminal domain and an intracellular carboxy terminus. These receptors function in the regulation of numerous physiological processes such as the secretion of insulin, glucagon, and growth hormone, as well as cell growth induced by neuronal excitation in both the central and peripheral nervous system. Somatostatin receptors are activated via somatostatin secreted by nerve and endocrine cells.

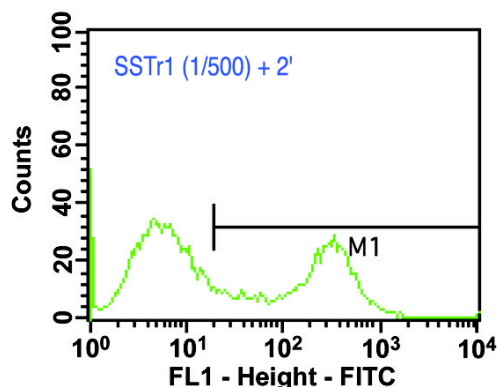
#### Specificity and Preparation:

This antibody was raised against rat somatostatin receptor-1 (SSTr1) and recognizes SSTr1 in human. The somatostatin receptor antisera was developed in rabbit using a peptide corresponding to the extracellular domain conjugated to keyhole limpet hemocyanin (KLH) for immunization. Antisera was then affinity-purified with the peptide utilized for immunization. The antibody is routinely tested by immunoblotting and flow cytometry.

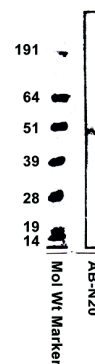
#### Usage and Storage:

Applications include immunoblotting (ATS in-house) using a dilution of 1:500-1:1,000 where a band is seen at 53-72 kDa representing SSTr1 and flow cytometry (ATS in-house; 1:500). Store the antibody at -20°C for one year. Avoid repeated freezing and thawing. Gently spin down material before use; 5-10 seconds in a microfuge should be adequate.

**Available Control(s):** SSTr1 peptide



Mia PaCa-2 (human pancreatic) cells were used for FACS analysis with AB-N20AP (Lot #35-67). Cells were treated with AB-N20AP at a 1:500 dilution and subsequently with Goat-anti-Rabbit-FITC.



Lane 1: Molecular weight standards (Invitrogen See-Blue)  
Lane 2: 111  $\mu$ g of Mia PaCa-2 (human pancreatic cells) cell membrane extract probed with AB-N20 at a 1:100 dilution.