



11175-A FLINTKOTE AVENUE, SAN DIEGO, CA 92121
TELEPHONE (858) 642-1988 • FAX (858) 642-1989
WWW.ATSBIO.COM • ATS@ATSBIO.COM

FITC-labeled Goat Anti-Rabbit IgG (H+L)
[FITC-labeled goat Antibody to Rabbit IgG (H+L)]
FLUORESCENT CONJUGATE

Catalog Number: FL-04
Quantity: 500 micrograms
Format: PBS (0.14 M Sodium Chloride; 0.003 M Potassium Chloride; 0.002 M Potassium Phosphate; 0.01 M Sodium Phosphate; pH 7.4), no preservative.
Host: Goat

Background:

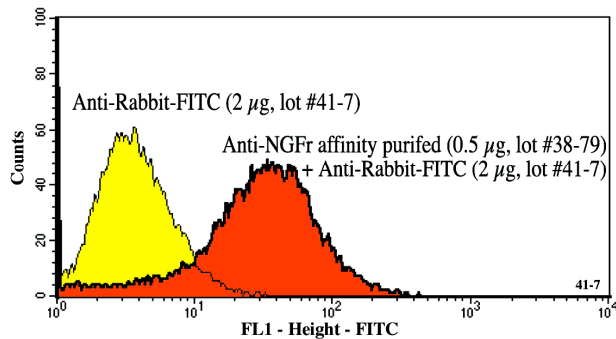
FITC-labeled goat anti-rabbit IgG can be used to verify specific binding of rabbit IgG to its receptor. By first incubating cells with the primary rabbit antibody, and then binding the FITC-labeled goat anti-rabbit IgG to the primary antibody, a fluorescent marker is formed that can demonstrate expression of a receptor or affinity of an antibody for its receptor. FITC is excited by 488 nm wavelength light, and emits at 525 nm.

Specificity and Preparation:

This fluorescent conjugate was prepared using goat anti-rabbit IgG (H+L) and the fluorescent compound, fluorescein isothiocyanate (FITC). The antibody binds to rabbit IgG, and is affinity-purified to decrease background and non-specific binding. This antibody exhibits maximal binding to rabbit IgG antibodies, and minimal cross-reactivity with other molecules. This product is routinely tested by flow cytometry.

Usage and Storage:

Applications include flow cytometry (ATS in-house; 1 μ g/million cells). Store at 4°C. DO NOT STORE FROZEN. The material may display diminished activity as a result of repeated freezing and thawing.



NG3 cells were incubated with an affinity-purified rabbit polyclonal primary antibody for one hour. The cells were then incubated for 30 minutes with FITC-labeled goat anti-rabbit IgG secondary. Sample was read on a FACScan flow cytometer and data was analyzed with Cell Quest software.