

**Antibody to Saporin, Affinity-Purified**  
**GOAT POLYCLONAL**

**Catalog Number:** AB-15AP  
**Quantity:** 50 micrograms  
**Format:** PBS (0.14 M Sodium Chloride; 0.003 M Potassium Chloride; 0.002 M Potassium Phosphate; 0.01 M Sodium Phosphate; pH 7.4), no preservative.  
**Host:** Goat  
**Isotype:** IgG  
**Immunogen:** Saporin

**Background:** Saporin is obtained from the seeds of the Soapwort plant (*Saponaria officinalis*), a plant that grows wild in Britain and other parts of Europe. Saporin is a plant enzyme with N-glycosidase activity that depurinates a specific nucleotide in the ribosomal RNA 28S, thus irreversibly blocking protein synthesis. It belongs to the well-characterized family of ribosome-inactivating proteins (RIPs). There are two types of RIPs: type I, which are much less cytotoxic due to the lack of the B chain and type II, which are distinguished from type I RIPs by the presence of the B chain and their ability to enter cells on their own. However, type I RIPs can still be internalized by fluid-phase endocytosis. Upon internalization, the ribosomes are inactivated, resulting in cell death.

**Specificity & Preparation:** This antibody recognizes saporin. Saporin was used as the immunogen. The antibody was affinity-purified against saporin attached to a CnBr-Sepharose support column. The antibody is routinely tested by Western blot.

**Usage:** Applications include immunoblotting (ATS in-house; 1:1,000).

**Storage:** Store the antibody at 4°C for one month or -20°C in undiluted aliquots for one year. Avoid repeated freezing and thawing. Gently spin down material 5-10 seconds in a microfuge before use.

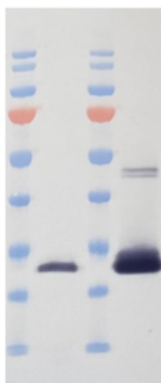


## Antibody to Saporin, Affinity-Purified GOAT POLYCLONAL



Scan to view  
all product  
references.

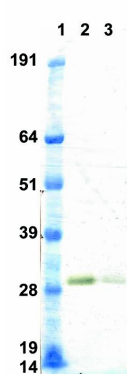
To view protocol(s) for this and other products please visit: [www.ATSBio.com/library/protocols](http://www.ATSBio.com/library/protocols)



Lane 1 and 3: Molecular weight standards

Lane 2: 100 ng of Saporin probed with Goat anti-Saporin affinity-purified (AB-15AP) at 10 µg/ml

Lane 4: 1000 ng of Saporin probed with Goat anti-Saporin affinity-purified (AB-15AP) at 10 µg/ml



Lane 1: Molecular weight standards (Invitrogen SeeBlue)

Lane 2: 50 ng of Saporin probed with Goat anti-Saporin affinity-purified (AB-15AP) at 1.0 µg/ml

Lane 3: 25 ng of Saporin probed with Goat anti-Saporin affinity-purified (AB-15AP) at 1.0 µg/ml