

**HRP-labeled Anti-Phospho-AKT1 Ser-473**
RABBIT POLYCLONAL

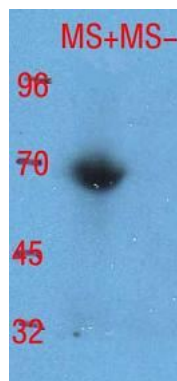
Catalog Number: AB-203
Quantity: 100 micrograms
Format: Stabilizing buffer, 50% glycerol
Host: Rabbit
Immunogen: Synthetic phosphor-peptide based on human Akt1 (465-479 aa)-KLH conjugates

Specificity & Preparation: This antibody recognizes phosphorylated Akt1 on serine 473. It does not cross-react with the non-phosphorylated form of Akt. The antibody is affinity-purified with phospho-peptide affinity chromatography followed by affinity absorption with non-phosphopeptide of the same sequence. It is conjugated to horseradish peroxidase (HRP). Concentration 250 μ g/ml.

Usage: Reported to be effective for ELISA (0.25 μ g/mL) and immunoblotting (western blot, 0.25-1 μ g/mL).

Storage: Store the antibody at -20°C. Stable for up to three years. Avoid repeated freezing and thawing. Gently spin down material 5-10 seconds in a microfuge before use.

To view protocol(s) for this and other products please visit: www.ATSBio.com/library/protocols



Western-blot analysis of the mouse spleen with P0455.
MS+, spleen extract from mouse treated with LPS
MS-, spleen extract from control mouse