

Antibody to Phospho-AKT1 Ser-473
Rabbit Polyclonal

Catalog Number: AB-204
Quantity: 100 micrograms
Format: PBS with 50% glycerol
Host: Rabbit
Immunogen: Synthetic peptide (pS-473) based on human Akt1-KLH conjugates

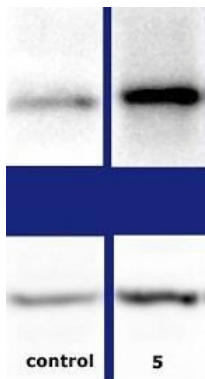
Specificity and Preparation:

Recognizes phosphorylated Akt on serine 473. Does not cross-react with the non-phosphorylated Akt. Affinity-purified with phospho-peptide affinity chromatography followed by affinity absorption with non-phosphopeptide. The concentration is 250 $\mu\text{g/ml}$.

Usage and Storage:

Reported to be effective for ELISA (0.25 $\mu\text{g/mL}$), immunoblotting (western blot, 1 $\mu\text{g/mL}$), and immunoprecipitation (10 $\mu\text{g}/2$ mg crude protein).
Store the antibody at -20°C . Stable for up to three years. Avoid repeated freezing and thawing. Gently spin down material before use; 5-10 seconds in a microfuge should be adequate.

To view protocol(s) for this and other products please visit: www.ATSBio.com/support/protocols



Western-blot analysis of the Fab treated cell lysate with anti-phospho Akt (ser473), P0453 (top) and a mono-clonal anti-phospho-Akt (ser 473) from other supplier (bottom)
Control= lymphocytes with no treatment