

**Antibody to 6His**
MOUSE MONOCLONAL

Catalog Number: AB-213
Quantity: 100 micrograms
Format: PBS, pH 7.4 with 0.05% sodium azide. Frozen liquid.
Host: Mouse
Isotype: IgG_{2b}
Clone: HIS.H8
Immunogen: 6x His Synthetic peptide (6His)

Background: The use of polyhistidine tags has become a popular method for protein purification, commonly used in the screening process as a tag for your protein or peptide of interest. This polyhistidine epitope tag is generally comprised of six consecutive histidine amino acid residues located at the N-terminal, C-terminal, or internally. The 6 His-Tag is widely used because of its affinity to bind nickel or cobalt metal ions attached to sepharose, which can then be used to purify the protein in a native or denatured state.

Specificity & Preparation: Recognizes His-tagged recombinant proteins. The concentration is 1 mg/ml.

Usage: Reported to be effective for immunoblotting (western blot, 1:1000), immunoprecipitation and immunostaining (1:200). This antibody has also been used in ELISA and dot-blot; the dilutions for these applications are assay dependent.

Storage: Store the antibody at 4°C for three months or -20°C in undiluted aliquots for up to one year. Avoid repeated freezing and thawing. Gently spin down material 5-10 seconds in a microfuge before use.

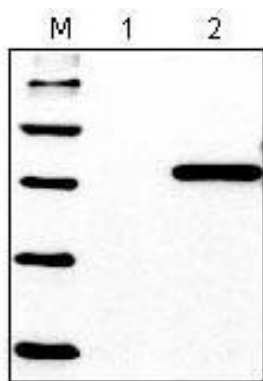


Antibody to 6His
MOUSE MONOCLONAL

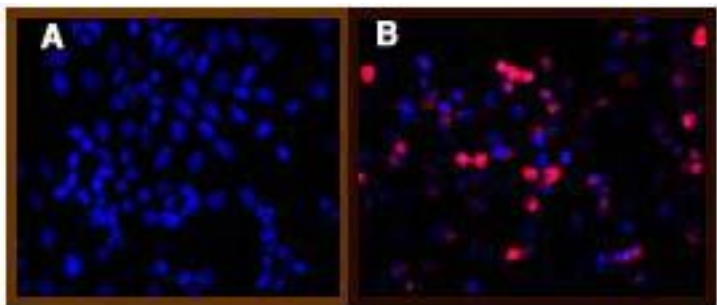


Scan to view
all product
references.

To view protocol(s) for this and other products please visit: www.ATSBio.com/library/protocols



His Western Blot analysis of 293 cells transfected with His-tagged vector (Lane 2) and untransfected control (Lane 1).



Immunofluorescence staining of His-tag fusion protein in 293 cells. A) untransfected control; B) transfected.