

Antibody to Methylated Lysine
Rabbit Polyclonal

Catalog Number: AB-225
Quantity: 100 micrograms
Format: PBS with 50% glycerol
Host: Rabbit
Immunogen: methylated KLH conjugates

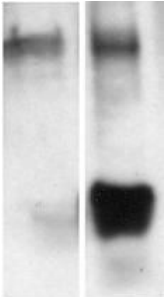
Specificity and Preparation:

Recognizes proteins or peptides methylated on lysine residues (mono, di-methyllysine). It does not cross-react with acetylated proteins. Cross-reactivity with tri-methyllysine is not tested. The antibody is immunoaffinity-purified with epsilon N-methyl lysine on agarose. The concentration is 250 mg/ml.

Usage and Storage:

Reported to be effective for ELISA (1:2000), immunoblotting (western blot, 1:250-1000), and immunoprecipitation (10 μ g/mg crude protein).
Store the antibody at -20°C. Stable for up to three years. Avoid repeated freezing and thawing. Gently spin down material before use; 5-10 seconds in a microfuge should be adequate.

To view protocol(s) for this and other products please visit: www.ATSBio.com/support/protocols



Western blot analysis of the methylated histone from melanoma cells with anti-methylated lysine. Histones were isolated with cold 0.1N HCl extraction followed by method.
Left Lane: blot with 0.5 ug/mL of anti-MeK in TBSt and blocked with synthetic methylated BSA 100 ug/mL.
Right Lane: blot with 0.5 ug.mL of anti-MeK in TBSt.