

**Anti-Phospho-Crebtide**  
Rabbit Polyclonal

**Catalog Number:** AB-247  
**Quantity:** 100 micrograms  
**Format:** TBS, 0.1% NaN<sub>3</sub>  
**Host:** Rabbit  
**Immunogen:** phospho-Crebtide (KRREILSRRPpSYR)-KLH

**Specificity and Preparation:**

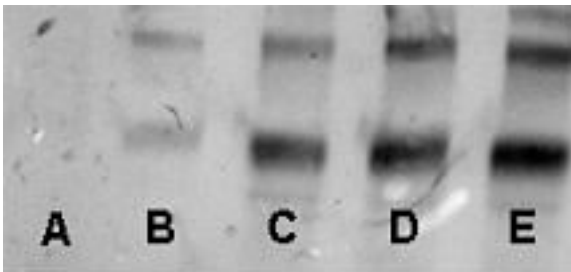
Recognizes only the phosphorylated Crebtide product of PKA and PKC in a non-radioactive kinase assay, does not cross-react with the non-phosphorylated Crebtide. Affinity-purified with KRREILSRRPpSYR on agarose followed by affinity adsorption with non-phosphorylated Crebtide. The concentration is 250 µg/ml.

**Usage and Storage:**

Reported to be effective for ELISA, immunoblotting (western blot), and non-radioactive PKA and PKC kinase assay.

Store the antibody at -20°C. Stable for up to three years. Avoid repeated freezing and thawing. Gently spin down material before use; 5-10 seconds in a microfuge should be adequate.

**To view protocol(s) for this and other products please visit: [www.ATSBio.com/support/protocols](http://www.ATSBio.com/support/protocols)**



Western-blot analysis of the BSA-Crebtide phosphorylated with PKC alpha.  
Kinase /assay: Lane A, 0.00 ng; Lane B, 4 ng; Lane C, 15 ng; Lane D, 60 ng; Lane E, 250 ng