

**Antibody to Stat1**
RABBIT POLYCLONAL

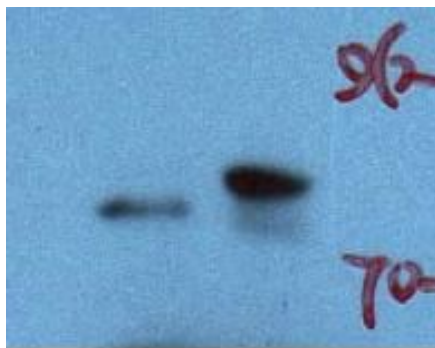
Catalog Number: AB-260
Quantity: 100 micrograms
Format: PBS, pH 7 with 50% glycerol
Host: Rabbit
Immunogen: Stat1 peptide (680-730 aa)-KLH conjugates

Specificity & Preparation: Recognizes stat1. Affinity-purified with peptide-affinity chromatography. The concentration is 250 mg/ml.

Usage: Reported to be effective for ELISA, western blot, and immunohistochemistry.

Storage: Store the antibody at -20°C. Stable for up to three years. Avoid repeated freezing and thawing. Gently spin down material 5-10 seconds in a microfuge before use.

To view protocol(s) for this and other products please visit: www.ATSBio.com/library/protocols



Western blot analysis of the mouse spleen with Anti-Stat1.
Left: Spleen from control mouse
Right: Spleen from mouse treated with LPS