

Biotin-labeled Anti-Tri-methyl Lysine
Rabbit Polyclonal

Catalog Number: AB-263
Quantity: 100 micrograms
Format: PBS with 50% glycerol
Host: Rabbit
Immunogen: methylated KLH conjugates

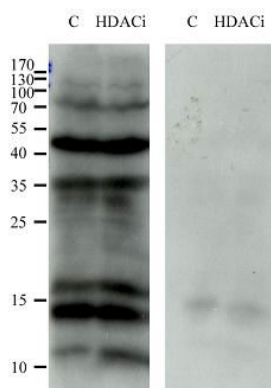
Specificity and Preparation:

Recognizes proteins with trimethylation on lysine residues (N-epsilon). Does not cross-react with acetylated proteins and mono- and dimethylated proteins. Affinity-purified from the anti-serum against chemically methylated protein antigen. Conjugated to NHS-activated d-biotin at an antibody/biotin ratio of approximately 1/10. Concentration 500 mg/ml.

Usage and Storage:

Reported to be effective for ELISA (1:2000), immunoblotting (western blot, 1:2000), immunoprecipitation (5 μ g/mg protein sample), immunofluorescent staining (5 μ g/mL or 1:100). Store the antibody at -20°C. Stable for up to twelve months. Avoid repeated freezing and thawing. Gently spin down material before use; 5-10 seconds in a microfuge should be adequate.

To view protocol(s) for this and other products please visit: www.ATSBio.com/support/protocols



Western blot analysis of protein trimethylated from human melanoma cell (MMRU) with biotinylated lysine antibody. Left: MMRU cell treated with TSA (HDACi) and not treated (C). Right: the trimethyllysine antibody signal was blocked by competitive inhibition with free N-epsilon Trimethyllysine.