



HRP-labeled Anti-Tri-methyl Lysine RABBIT POLYCLONAL

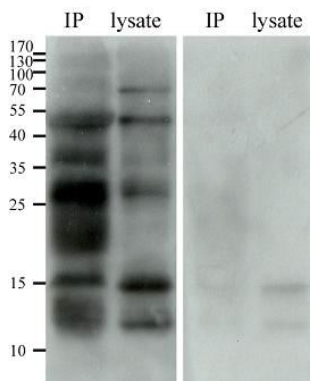
Catalog Number: AB-264
Quantity: 100 micrograms
Format: PBS with 50% glycerol in HRP stabilizing buffer
Host: Rabbit
Immunogen: methylated KLH conjugates

Specificity & Preparation: Recognizes proteins with trimethylation on lysine residues (N-epsilon). Does not cross-react with acetylated proteins and mono- and dimethylated proteins. This antibody has been used on both mouse and human samples. Affinity-purified from the anti-serum against chemically methylated protein antigen. Conjugated to horseradish peroxidase (HRP) via reductive amination. The concentration is 500 µg/ml.

Usage: Reported to be effective for ELISA (1:5000) and immunoblotting (western blot, 1:5000).

Storage: Store the antibody at -20°C. Stable for up to twelve months. Avoid repeated freezing and thawing. Gently spin down material 5-10 seconds in a microfuge before use.

To view protocol(s) for this and other products please visit: www.ATSBio.com/library/protocols



Immunoprecipitation of trimethylated proteins from mouse spleen extract with tri-methyllysine antibody and blotting with anti-trimethyllysine HRP.
Left: Trimethyllysine antibody signal of the IP sample and crude lysate sample.
Right: Trimethyllysine antibody signal of the IP sample and crude lysate sample were blocked through competitive inhibition by free trimethyllysine