

**Antibody to GFP
MOUSE MONOCLONAL**

Catalog Number: AB-268
Quantity: 100 micrograms
Format: 10 mM PBS, pH 7.2
Host: Mouse
Isotype: IgG1
Immunogen: GFP from the jellyfish *Aequorea victoria* N-terminal peptide-KLH conjugates

Specificity and Preparation:

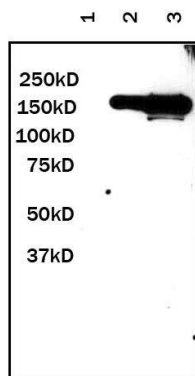
Recognizes native and denatured forms of GFP and its variants EGFP, YFP, EYFP, and CFP. This antibody is tested by western blot with ECL showing sensitivity with 1-10 ng of purified GFP or GFP fusion proteins. The concentration is 1 mg/ml.

Usage and Storage:

Reported to be effective for ELISA, dot blot, western blot (with ECL 1:1000 dilution, incubation for one hour at room temperature), immunoprecipitation, and immunostaining. For each application, the reagent should be titrated to obtain optimal results.

Store the antibody at 4°C (add 0.1% NaN₃) for three months or -20°C in undiluted aliquots for up to one year. Avoid repeated freezing and thawing. Gently spin down material before use; 5-10 seconds in a microfuge should be adequate.

To view protocol(s) for this and other products please visit: www.ATSBio.com/support/protocols



Lane 1: Negative Control
Lane 2: 1 µg GFP Fusion Protein Lysate
Lane 3: 10 µg GFP Fusion Protein Lysate

Antibody working Cont: 1:1,000 from 1 mg/ ml stock Cont.