

**HRP-labeled Antibody to His-tag
RABBIT POLYCLONAL**

Catalog Number: AB-302
Quantity: 100 micrograms
Format: 500 mg/ml in HRP stabilizing buffer
Host: Rabbit
Immunogen: Polyhistidine peptide HHHHHH conjugated to KLH

Background:

Poly histidine (HHHHHH) is frequently used as an affinity tag to facilitate the detection, isolation, and localization of recombinant proteins.

Specificity and Preparation:

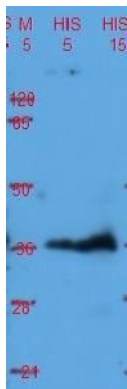
This high-affinity and specific histidine antibody is developed using HHHHHH peptide conjugated to KLH and affinity purified with the HHHHHH peptide on agarose. It is conjugated to horseradish peroxidase (HRP). The antibody recognizes His-tag proteins in all species.

Usage and Storage:

Reported to be effective for detection, isolation and localization of His-tag proteins, ELISA (0.5 mg/ml) and immunoblotting (western blot, 0.5 mg/ml). It could be utilized for direct blotting without additional use of secondary antibodies. The investigator must determine the ideal working concentration for each specific application.

Store material at -20°C for up to three years. Gently spin down material before use; 5-10 seconds in a microfuge should be adequate.

To view protocol(s) for this and other products please visit: www.ATSBio.com/support/protocols



Western blot analysis of the His-tag protein (37 kd)
transfected cell lysate (5 and 15 mg/lane)