



**Antibody to RFP**  
**MOUSE MONOCLONAL**

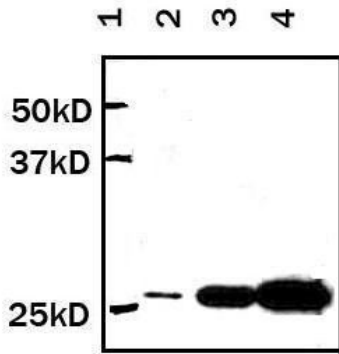
**Catalog Number:** AB-332  
**Quantity:** 100 micrograms  
**Format:** PBS with 0.1% NaN<sub>3</sub>  
**Host:** Mouse  
**Isotype:** IgG<sub>1</sub>  
**Clone:** RFP.H8  
**Immunogen:** RFP from *Discosoma* anemone N-terminal peptide-KLH conjugates

**Specificity & Preparation:** This antibody recognizes native and denatured forms of red fluorescent protein (RFP). It will also recognize tag-RFP, turbo-RFP, DeRed, mCherry, and mOrange. The antibody was generated against RFP from *Discosoma* anemone N-terminal peptide-KLH conjugates.

**Usage:** Reported to be effective for ELISA, dot blot, Western blot (with ECL 1:1000 dilution, incubation for one hour at room temperature), immunoprecipitation, and immunostaining. Optimal concentrations and conditions for other assays must be determined by the end user.

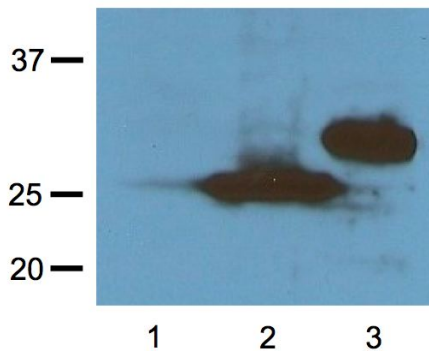
**Storage:** The antibody is stable at 4°C for several months. For long-term storage keep antibody at -20°C. Avoid repeated freezing and thawing. Gently spin down material 5-10 seconds in a microfuge before use.

To view protocol(s) for this and other products please visit: [www.ATSBio.com/library/protocols](http://www.ATSBio.com/library/protocols)



Lane 1: Ladder  
 Lane 2: 1  $\mu$ g 293 Cell lysate with DsRed Expression  
 Lane 3: 5  $\mu$ g 293 Cell lysate with DsRed Expression  
 Lane 4: 10  $\mu$ g 293 Cell lysate with DsRed Expression

Antibody working Cont: 1:1,000-1:5,000 from 1mg/ml stock Cont.



1:1000 (1  $\mu$ g/mL) Ab dilution probed against HEK293 cells transfected with RFP-tagged protein vector.  
 Lane 1: untransfected control  
 Lane 2: transfected with Turbo-RFP  
 Lane 3: transfected with DeRed