

**Antibody to Telomeric Repeat Binding Factor 1 (TRF1)**
MOUSE MONOCLONAL

Catalog Number: AB-37
Quantity: 1 milliliter
Format: Hybridoma supernatant + 0.005% Thimerosal
Host: Mouse
Isotype: IgG₁ k
Immunogen: Full length recombinant human TRF1

Background: Telomeres, the specialized end structures of chromosomes, contain tandem nucleotide TTAGGG repeats that form nucleoprotein complexes required for replication. The telomeric repeat binding factor 1 (TRF1) is one component of human telomeres and it has been proposed that its function involves regulating telomere elongation. With the postulation that telomere dysfunction and telomerase activation may play important roles in prostate tumorigenesis and loss of genome integrity during breast cancer development, an antibody to TRF1 is a valuable asset in cancer research and other studies.

Specificity & Preparation: This antibody recognizes the human telomeric repeat binding factor 1 (TRF1). Full length recombinant human TRF1 was used as immunogen. It was produced in cell culture supernatant and contains 0.005% Thimerosal as a preservative. The antibody is routinely tested by western blot.

Usage: Applications include western blot (1:20-1:200, ATS in-house).

Storage: Store at 4°C. DO NOT STORE FROZEN. The material may display diminished activity as a result of repeated freezing and thawing. Gently spin down material 5-10 seconds in a microfuge before use.



**Antibody to Telomeric Repeat Binding Factor 1 (TRF1)
MOUSE MONOCLONAL**

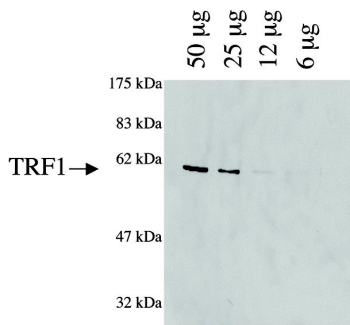


Scan to view
all product
references.

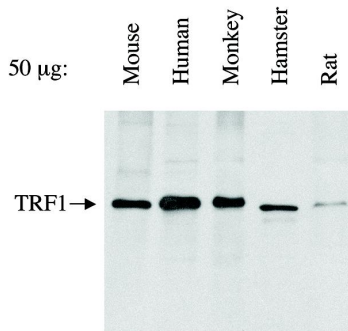
Selected References:

1. Gilley D, Tanaka H, Herbert BS (2005) Telomere dysfunction in aging and cancer. *Int J Biochem Cell Biol* 37(5):1000-1013.
2. Angele S, Falconer A, Foster CS, Taniere P, Eeles RA, Hall J (2004) ATM protein overexpression in prostate tumors: possible role in telomere maintenance. *Am J Clin Pathol* 121(2):231-236.
3. van Steensel B, de Lange T (1997) Control of telomere length by the human telomeric protein TRF1. *Nature* 385(6618):740-743.

To view protocol(s) for this and other products please visit: www.ATSBio.com/library/protocols



HeLa whole cell extracts



Whole cell extracts