



## Biotin-labeled Antibody to vGAT, affinity purified RABBIT POLYCLONAL

**Catalog Number:** AB-N44AP-BT  
**Quantity:** 50 micrograms  
**Format:** PBS (0.14 M Sodium Chloride; 0.003 M Potassium Chloride; 0.002 M Potassium Phosphate; 0.01 M Sodium Phosphate; pH 7.4), no preservative.  
**Host:** Rabbit  
**Immunogen:** synthetic vGAT peptide

**Background:** Vesicular GABA transporters (vGAT) mediate the accumulation of GABA into synaptic vesicles and its release from nerve terminals. This transporter is expressed in the nerve endings of GABAergic neurons throughout the CNS and has also been found in the pancreas and pituitary gland. During development, expression of the vGAT protein changes. Expression can also change in response to patterns of neuronal activity.

**Specificity & Preparation:** Affinity-purified anti-vGAT was raised against the C-terminal of the rat vesicular GABA transporter. The antigen sequence is identical among human, rat, mouse, pig and guinea pig. This antibody was affinity-purified using the C-terminal of vGAT. It has been conjugated to biotin via an amide bond. The antibody is routinely tested by flow cytometry.

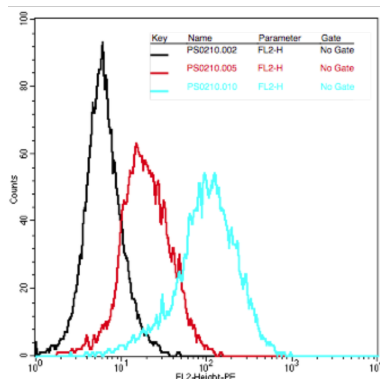
**Usage:** Applications include flow cytometry (ATS in-house; 1:1000). Working dilutions must be determined by end user.

**Storage:** Store the antibody at -20°C for one year. Avoid repeated freezing and thawing. Gently spin down material 5-10 seconds in a microfuge before use.



Scan to view  
all product  
references.

To view protocol(s) for this and other products please visit: [www.ATSBio.com/library/protocols](http://www.ATSBio.com/library/protocols)



HEK-293 cells (black line) and HEK-293 vGAT transfectants clone 2E11 (blue line) were incubated with 10 ug of Anti-vGAT antibody for 1 hour. PE was used as the secondary and was applied at 2 ug per sample for 30 minutes. The control in this figure (red line) is secondary PE alone on HEK-293 vGAT cells. Each sample contained  $2 \times 10^6$  cells. Data analysis was done with CellQuest software.