



10451 ROSELLE STREET, #300, SAN DIEGO, CA 92121
TELEPHONE (858) 642-1988 • FAX (858) 642-1989
WWW.ATSBIO.COM • ATS@ATSBIO.COM

FITC-labeled Goat Anti-Rabbit IgG (H+L) FLUORESCENT CONJUGATE

Catalog Number: FL-04
Quantity: 500 micrograms
Format: 50% PBS (0.14 M Sodium Chloride; 0.003 M Potassium Chloride; 0.002 M Potassium Phosphate; 0.01 M Sodium Phosphate; pH 7.4), 50% glycerol; no preservative.
Host: Goat

Background:

FITC-labeled goat anti-rabbit IgG can be used to verify specific binding of rabbit IgG to its receptor. By first incubating cells with the primary rabbit antibody, and then binding the FITC-labeled goat anti-rabbit IgG to the primary antibody, a fluorescent marker is formed that can demonstrate expression of a receptor or affinity of an antibody for its receptor. FITC is excited by 488 nm wavelength light, and emits at 525 nm.

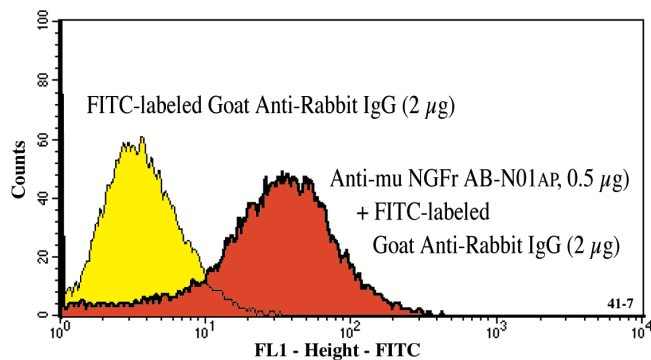
Specificity and Preparation:

This fluorescent conjugate was prepared using goat anti-rabbit IgG (H+L) and the fluorescent compound, fluorescein isothiocyanate (FITC). The antibody binds to rabbit IgG, and is affinity-purified to decrease background and non-specific binding. This antibody exhibits maximal binding to rabbit IgG antibodies, and minimal cross-reactivity with other molecules.

Usage and Storage:

Applications include flow cytometry (ATS in-house; 1 $\mu\text{g}/10^6$ cells per 200 μl). Gently spin down material before use; 5-10 seconds in a microfuge should be adequate. The material can be handled safely using normal laboratory precautions. See Lot Number for lot-specific storage instructions.

To view protocol(s) for this and other products please visit: www.ATSBio.com/support/protocols



NG3 cells were incubated with an affinity-purified rabbit polyclonal primary antibody for one hour. The cells were then incubated for 30 minutes with FITC-labeled goat anti-rabbit IgG secondary. Sample was read on a FACScan flow cytometer and data was analyzed with Cell Quest software.